

JOTRUK

(AC / DC Drive)

Four wheel Industrial Platform Truck
(2000 / 3000 / 4000 kg.)



- MOSFET stepless speed controller and heavy duty contactors
- Carrying capacity up to 2000 / 3000 / 4000 kg
- Pollution free and user friendly
- Very good tractive force and gradability
- Easy and comfortable to ride

The Jost's electric platform truck model Jotruk is a four wheel battery operated material handling equipment used for carrying load up to 2000 / 3000 / 4000 kg over long distances on asphalt or smooth concrete road. It is ideal for use in inter-plant transportation, factories, warehouses, defence units, railway workshops, airports and large processing plants. Josts leads the way with tough, dependable industrial platform trucks.

Operator Area : Comfortable seat with back rest ergonomically positioned over battery cover with easy reach to steering wheel and optimum leg-space for operating the accelerator and brakes. The control switches on the panel are easily visible and accessible.

Drive and Transmission : The vehicle is driven by a DC / AC (optional) motor of suitable rating with class 'F' insulation and powered by suitable traction battery. The silent and efficient power is ensured through fully enclosed oil bathed gear box mounted directly on motor and output shaft of gearbox connected to rear differential axle through propeller shaft.

Front Axle : Front axle comprises of robustly constructed, central axle and stub axle with king pin assembly. The front axle connected to the main chassis through the suspension system.

Drive Control : Microprocessor based MOSFET controller provides smooth and stepless control of speed and acceleration. The high life cycle contactors used in the controller circuit enhances dependability and productivity. Alternatively four step resistance control can also be provided as an option.

Control Panel : The control panel is provided with conveniently located simple controls such as ON – OFF key switch, forward and reverse switch, emergency power cut-off switch and battery discharge indicators. Battery level indicator with hour meter display can also be supplied as an option.

Chassis : The chassis frame consists of robust welded steel frame, fabricated from suitable rolled sections and plates. The platform is made of thick M.S chequered plate of two half's. The platform can be of fixed or elevating type for carrying stillages. In the elevating platform model, the platform elevation is achieved by hand lever operated hydraulic pump and hydraulic cylinder. Motorised platform can also be supplied as an option.

Suspensions : The suspension is through leaf springs and shock absorbers on the both axle.

Steering : Steering mechanism consists of automotive steering gear unit. The entire unit is suitably inclined towards operators seat for comfortable drive.

With
Dumper



With

Scissor Lift



With

Side Flap



Brakes : Internally expanding foot operated hydraulic brakes on both wheels ensures smooth braking. Parking brake is actuated by hand operated lever on the left hand side of the operators seat. With AC motor (optional), the regenerative function of the controller provides additional braking during the operation and the truck comes to halt automatically with removal of foot from acceleration pedal.

Wheels : Solid rubber tyres are provided on both front and rear axle for operating over a variety of surface conditions. Non-marking tyres can also be supplied as an option on request.

Accessories : The truck comes with head / tail / brake lights and horn as standard. The truck can also be provided with revolving / flashing lights, reverse buzzer, side indicators, canopy, battery roller bed as an option.

Variations : The platform truck can also be provided with elevating platform, dumper bucket, side flaps, scissor lift to cater various needs of the industries. For machine shop application, the platform truck can be supplied with coolant containers for supply and collection of fresh / used coolant for machines. The truck with capacity of 2000 / 3000 kg can also be supplied with extended platform length and wider width up to 2500 mm and 1400 mm respectively on request.

Safety : The parking brake enables vehicle to park on slopes without any kind of movement. The emergency power cut-off switch isolates the battery from the control panel to prevent any situation in emergency. Safety accessories like revolving / flashing lights, reverse buzzer, side indicators, canopy can also be supplied with the truck as option.

Servicing : The modular, service friendly design with easily removable front / top cover, twin platform sheets provides easy access to all components for servicing, thus saving valuable time during maintenance.

Battery : The vehicle is supplied with lead acid traction batteries of 36V / 299Ah for 2000 kg, 3000 kg model and 48V / 299Ah for 4000 kg model as standard. 36V / 330Ah batteries (for 2000 and 3000 kg model) can be supplied as an option. The trucks can also be supplied with maintenance free batteries as an option.

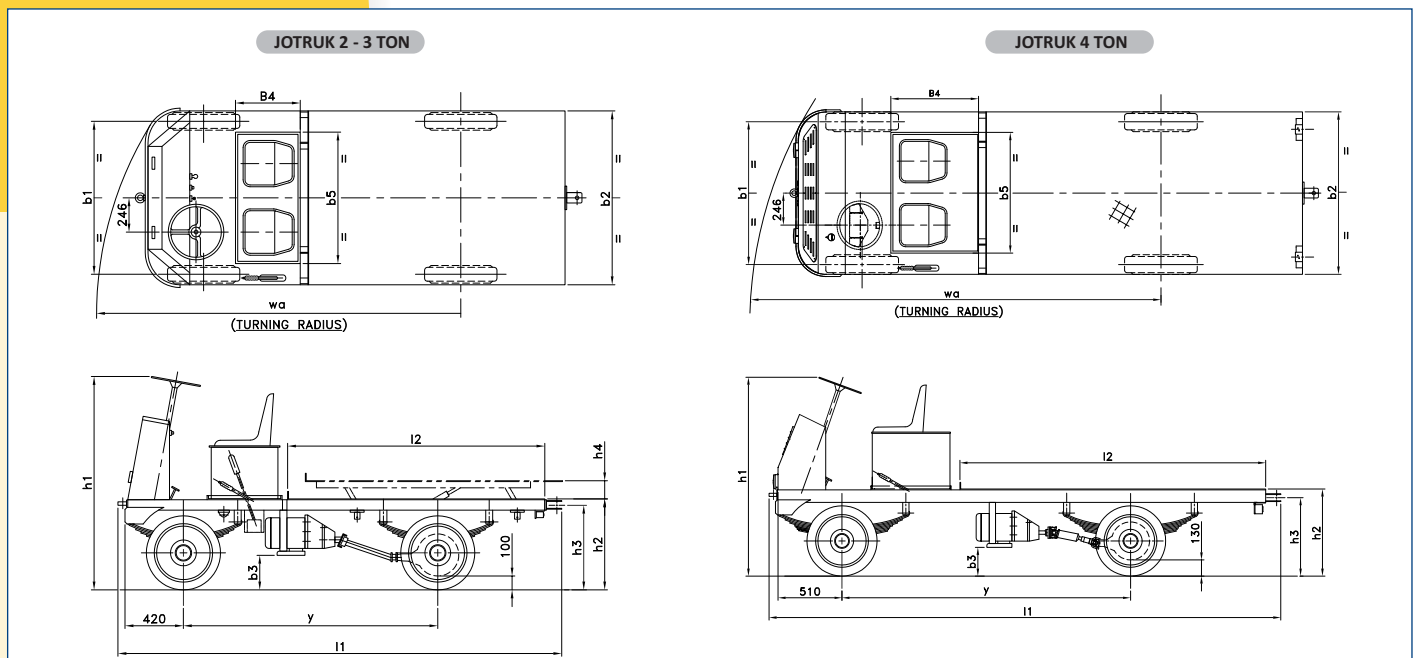
Charger : The truck is supplied with high frequency constant current charger of suitable rating as a standard.

(AC / DC Drive) Four wheel Industrial Platform Truck (2000 / 3000 / 4000 kg.)

Performance Data

Identification	Model	nos.	Jotruk – F		Jotruk – E		Jotruk – F		Jotruk – E		Jotruk – F		
	type		Fixed		Elevating		Fixed		Elevating		Fixed		
Operation	type		Seated		Seated		Seated		Seated		Seated		
Load capacity	Kg		2000		2000		3000		3000		4000		
Wheelbase	y = mm		1830		1830		1830		1830		2300		
Weight	Service weight excl. battery (apx.)	Kg	785		885		835		960		1150		
	Battery weight (apx.)	Kg	430		430		430		430		550		
Chassis	Tyres	type	Solid Rubber		Solid Rubber		Solid Rubber		Solid Rubber		Solid Rubber		
	Tyre size, Front	mm	Ø535 x 127		Ø535 x 127		Ø535 x 127		Ø535 x 127		Ø560 x 152		
	Tyre size, Rear	mm	Ø535 x 127		Ø535 x 127		Ø535 x 127		Ø535 x 127		Ø560 x 152		
	Wheels, Front / Rear (x = driven wheels)nos.	2 x 2	2 x 2		2 x 2		2 x 2		2 x 2		2 x 2		
	Track width, Rear / front	b1 = mm	1080		1080		1080		1080		1100		
Basic Dimensions	Overall height	h1 = mm	1585		1585		1585		1585		1585		
	Overall length (2 - 3 ton)		3200		3200		3200		3200		-		
	Overall length for 2450mm platform length (4 ton)	l1 = mm	-		-		-		-		4100		
	Overall length for 2650mm platform length (4 ton)	l1 = mm	-		-		-		-		4300		
	Battery compartment (width x Length.)	B4 x b5 = mm	450 x 945		450 x 945		450 x 945		450 x 945		640 x 930		
	Overall width	b2 = mm	1250 / 1400		1250 / 1400		1250 / 1400		1250 / 1400		1250 / 1400		
	Ground clearance (below the gear box)	b3 = mm	250 [®]		250 [®]		250 [®]		250 [®]		250 [®]		
	Turning radius	wa = mm	3250		3250		3250		3250		4500		
	Platform Size	l2 x b2 = mm	1850 x 1250 / 1400		1850 x 1250 / 1400		1850 x 1250 / 1400		1850 x 1250 / 1400		2450 / 2650 x 1250 / 1400		
	Elevation Height	h4	-		130		-		130		-		
	Platform Height	h2 = mm	655 [®]		655 [®]		655 [®]		655 [®]		700 [®]		
	Towing Height	h3 = mm	610 [®]		610 [®]		610 [®]		610 [®]		655 [®]		
	Travel speed :	Laden	Km / hr	8	6	8	6	8	5	8	5	7	6
		Unladen	Km / hr	10	9	10	9	10	8	10	8	8	9
	Gradient performance :	Laden	Max. %	8	7	8	7	8	7	8	7	7	7
		Unladen	Max. %	12	10	12	10	12	10	12	10	12	10
	Service brake	type	Hydraulic		Hydraulic		Hydraulic		Hydraulic		Hydraulic		
Parking brake	type	Hand operated		Hand operated		Hand operated		Hand operated		Hand operated			
Power	Drive motor rating S2 = 60 min.	Kw	2.6		2.6		3.6		3.6		8.0		
	Drive	type	3 Ø AC	@Series DC	3 Ø AC	@Series DC	3 Ø AC	@Series DC	3 Ø AC	@Series DC	3 Ø AC	@Series DC	
	Battery voltage, nominal capacity	V / Ah	36 / 299		36 / 299		36 / 299		36 / 299		48 / 299		
	Charger (Single phase – automatic)	V / A	36 / 40		36 / 40		36 / 40		36 / 40		48 / 40		
Others	Drive control	type	Stepless Mosfet		Stepless Mosfet		Stepless Mosfet		Stepless Mosfet		Stepless Mosfet		
	Sound level at driver's ear	db(A)	85		85		85		85		85		

Note: 1. @ = Unladen Condition., 2. © = Resistance Controller available with DC series drive motor on request., 3. # = Towing arrangement is for towing the vehicle only.



* For any special requirements, Please contact Jost's H.O., Dimensions indicated here are subject to variations of ± 20 mm and performance ± 10%. Service weight ± 50 kg. Right to make changes and technical improvement reserved.

Jost's Engineering Company Limited

C-7 Wagle Industrial Estate, Road No. 12, Thane - 400 604. Maharashtra. INDIA.

T.: +91.22.6117 4000 / 2582 1727 F.: +91.22.6117 4020 E.: infomhe@josts.in

Bengaluru : +91.80.2226 3707 / 22263708 Chennai : +91.44. 2626 8536 / 2628 8407

Delhi : +91.11.4567 6000 / 14 Kolkata : +91.33.2242 9510 / 4008 1242 Pune : +91.20.2543 4350 / 90

Secunderabad : +91.40.2771 4934 / 44 / 54 Vadodara : +91.265.2351 642



Since 1907