



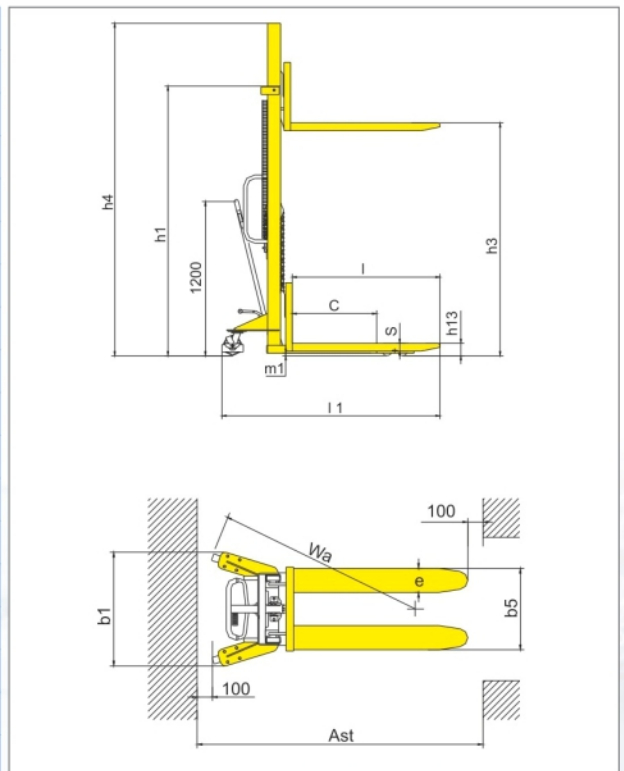
MHS 1016/1030

(Manual Hand Stacker)

- High quality Mast Steel Mast and strong construction ensures rigidity and durability.
- High Efficient pumps makes the control easier to operate
- Foot and hand controlling lifting functions
- Metal grid protects user from lift chains
- Safety wheel guard and brake system to ensure safety during operation.

Specifications:

Model		MHS 1016/1030
Load capacity (rated load)	Q (kg)	1000
Load center distance	c (mm)	600
Fork height, lowered	h13 (mm)	90
Height, Mast lowered	h1 (mm)	1490/2080
Max. Lift height	h3 (mm)	1000/3000
Height, Mast extended	h4 (mm)	1490/3420
Overall length	l1 (mm)	1655/1705
Overall width	b1 (mm)	755/860
Fork dimensions	s / e / l (mm)	61 / 170 / 1100(1150)
Width overall forks	b5 (mm)	550
Ground clearance, laden, below mast	m1 (mm)	25
Aisle width for pallets 1000 x 1200 crossways	Ast (mm)	2112
Aisle width for pallets 800 x 1200 lengthways	Ast (mm)	1945
Turning radius	Wa (mm)	1380
Lift speed, laden / unladen	mm / s	25
Lowering speed, laden / unladen	mm / s	Manual control
Service weight	kg	190/305



* WOF - Width over Forks

For any special requirements, Please contact Jost's H.O., Dimensions indicated here are subject to variations of ± 20 mm and performance $\pm 10\%$. Service weight ± 50 kg. Right to make changes and technical improvement reserved.



HS 1016/1030

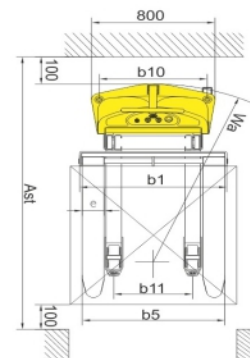
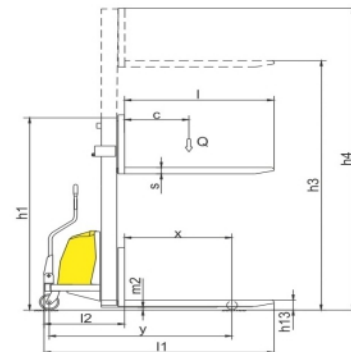
(Semi-Automatic Hand Stacker)

- Compact design with strong steel construction.
- Simple and convenient lifting operating system.
- Light and easy manual steering system.
- Equipped with a parking brake.
- Smooth control of precise lifting and lowering.

Specifications:

Model		HS1016/1030
Load capacity	Q (kg)	1000
Load center distance	c (mm)	500
Load distance, center of drive axle to fork	x (mm)	745
Tyre size, front	(mm)	∅ 180x50
Tyre size, rear	mm	∅ 80 X 70
Wheels number front rear(x=driven wheels)		2/2
Fork height, lowered	h13 (mm)	90
Height, mast lowered	h1 (mm)	2090 /2340
Max lift height	h3(mm)	1600 /3500
Height mast extended	h4 (mm)	2090/4060
Overall length	l1 (mm)	1735
length to face of forks	l2mm	665
Overall width	b1 (mm)	955
Fork dimensions	s/e/l(mm)	60/142/1070
Width overall forks	b5 (mm)	295-930
Aisel width for pallets 800x1200 lengthways	Ast(mm)	2267
Turning radius	Wa(mm)	1425
Lift speed laden/ unladen	m/s	0.07/0.09
Lowering speed laden/ unladen	m/s	0.1/0.13
Service brake		mechanical
Battery voltage, nominal capacity	V/Ah	12/120
Battery weight	kg	45
Battery dimensions l/w/h	mm	360x170x250
Service weight (with battery)	kg	385/ 525

HS 1030 Adjustable forks



For any special requirements, Please contact Jost's H.O., Dimensions indicated here are subject to variations of ± 20 mm and performance ± 10%.Service weight ± 50 kg. Right to make changes and technical improvement reserved.