



Since 1907

JFB 15 / 20 / 25 / 30

Josts Electric Counterbalance Trucks
(Capacity 1500 / 2000 / 2500 / 3000 Kg)

(AC Drive)

- ENVIRONMENT FRIENDLY
- HIGH PERFORMANCE
- EASY OPERATION
- SUPERIOR SAFETY
- EASY MAINTENANCE
- UNMATCHED SERVICE



Note: Above image is with optional accessories / offerings.





Since 1907

JFB 15 / 20 / 25 / 30

Josts Electric Counterbalance Trucks

Operators Area : Ergonomically convenient operator's area provides operator's comfort. All controls are located at easily accessible reach with ample leg room. Adjustable seat (optional) further enhances operator's comfort.

Drive : The vehicle is driven by an AC three phase induction drive motor of suitable rating with class 'F' insulation powered by suitable battery capacity. Efficient power transmission to front wheels is through noise free dual stage gear reduction unit and differential mechanism. Full floating drive axle mechanism ensures that the tyres loads are carried by differential housing.

Drive Control : Microprocessor based MOSFET controller enables smooth step less acceleration, variable speed control and precise inching movement. The controller comes with self diagnostic feature which monitors the control system for fault diagnostic purposes. The controller also enables regenerative braking thereby increasing the battery utilisation period.

Brakes : Automatic braking is enabled by regenerative braking when the operator removes his foot from the acceleration pedal. Service braking is ensured by self adjusting brakes with heavy duty brake linings and is effected by hydraulic braking actuated by ergonomically located foot pedal. Parking brake is through expandable shoes operated by cable connected to a hand operated lever located on operators left hand side.

Power Steering : Hydrostatic power steering system with automotive type tiltable steering column enables virtually fatigue free operation while maneuvering in confined area. The hydraulic steering unit, controls the steering action hydraulically through the steering cylinder mounted on the steer axle. The steering column is operated by 16" hand wheel provided with foam grip for operator's comfort.

Steer Axle : Articulating hydraulic steer axle of robust construction ensures accurate steering geometry, minimum tyre wear and sharp angle steering for greater maneuverability. It comprises of hardened steel bushing for the center pivot for prolonged trouble free life and integrated balanced, hydraulic cylinder located at convenient accessible position for easy maintenance.

Wheels : The truck is supplied with solid cushion tyres as standard. Solid cushion tyres with split rim construction at the front and rear enables operating over a variety of surfaces and overcoming the high reactive forces. The larger size tyres ensures better stability and carrying capacity, higher ground clearance and increased life. Non-marking tyres can also be provided as an option.

Chassis, Canopy and Counter Weight : Chassis is fabricated from heavy steel plates for excellent rigidity and strength. Battery compartment with cover is integrated with chassis and supports the operator's seat without compromising the accessibility of battery for routine maintenance. The canopy is made of hollow section for rigidity and protects the operator against the hazards of falling objects. The counter weight at the rear provides the adequate balancing load without making the truck bulky. It is provided with a lifting hook and towing bar for customer's convenience.

Mast, Carriage and Fork : Options of twin and triple masts of various lifts are available depending on the applications. Z section external mast and I section internal masts are reinforced with rigid tie bars and interlocked with load rollers ensures smooth movement and stability of the load. Carriage is fabricated of quality steel plates and provided with load rollers for smooth movement within the mast and durable service. Full floating lifting cylinders located on either sides of the mast assembly reduces side loading on seals and packaging. Free lift for container applications can be provided through center cylinder in triplex mast. Hose burst valve at base of cylinder assemblies act as a safety device in case hose failure. Forged and heat treated forks sustain the load for prolonged work cycles. Load back rest is provided as a standard. Side shift mechanism can also be provided as an option.

Hydraulic System : Hydraulic system is powered by Series DC motor of suitable capacity which drives a positive displacement high pressure external gear pump and operates the hydraulic functions of lifting-lowering, tilting and side shifting of loads (optional). The hydraulic functions are controlled manually through valve block. The pressure limiting valves prevent excessive pressure overloads. A high performance filter system with suction and return line filters ensures clean oils. The hydraulic system is controlled by MOSFET controller to drive the motor at different speeds for precise flow of oils for the required application thereby saving battery power. The hydraulic motor operates only when the functional switches are operated and gets automatically switched off otherwise.

Instrumentation and control : The hour meter and battery discharge indicators are provided as a standard on the front panel. The On-Off switch, forward reverse direction switch are located on the panel within easy reach. The control levers are positioned ergonomically for fatigue free operation.

Accessories & Attachments : The truck comes with head / tail / brake / side indicator lights, reverse light / horn, and rear view mirror as standard. Revolving lights can also be supplied as an option. The truck can also be supplied with side shift arrangement, extended forks and various attachments on customer request.

Battery : The vehicle is supplied with suitable traction battery with lead acid cells and adequate capacity rating as standard for non intensive application. Optional higher capacity rating batteries can also be provided for more intensive applications.

Charger : Automatic charger of suitable ratings is supplied depending on the battery selection.

AC Technology

EASY OPERATION:

Simple controls and hydraulic steering means less fatigue to operators.

OPERATOR COMFORT :

Ample leg room with adjustable steering and ergonomically positioned accelerator and brake pedal provides maximum operator comfort. Non-slip foot rests permits easy mounting and dismounting operation.

SUPERIOR SAFETY :

Hose burst valve is provided for slow and smooth landing during emergency, in the event of hose burst.

HIGH PRODUCTIVITY :

Controlled traction through powerful AC drive motor and powerful hydraulic system for smooth lifting and lowering for high performance



Note: Above image is with optional accessories / offerings.

HIGH STABILITY :

Low center of gravity design with quality steel plate welded body provides robustness and makes JFB stable and safe.

EASY MAINTENANCE :

Easily removable batteries , easily accessible components and easily available spare parts restricts machine down time drastically.

ADVANCED TECHNOLOGY :

With microprocessor based drive controller and hydraulic controller (optional) with fault diagnostic features for trouble free performance.

PROTECTIVE SAFETY :

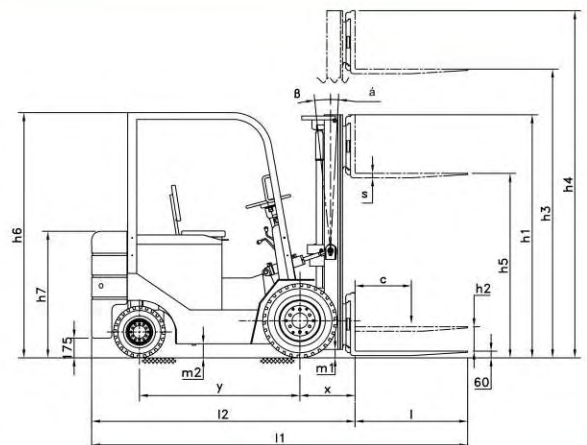
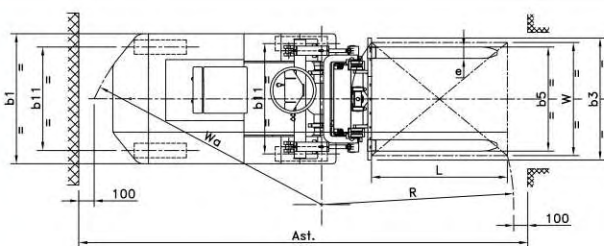
Robust and rigid canopy protects the operator against external hazards.

SUPERIOR PERFORMANCE :

Split rim solid cushion tyre (optional) of larger size ensures better traction and carrying capacity.

Benefits of AC Motor driven counterbalance trucks:

1. Less wearing parts - Less service
2. Better heat balance - Longer continuous operations
3. Less energy consumption - Lower operating cost
4. Longer work cycles - Longer battery life
5. Variable frequency drive - Precise control of speed
6. Reduced noise levels



Technical Specification

Identification	1.1	Model	nos.	JFB15	JFB20	JFB25	JFB30
	1.2	Drive	type	AC	AC	AC	AC
	1.3	Residual capacity lift	Q = Kg.	Refer chart	Refer chart	Refer chart	Refer chart
	1.4	Load center for rated capacity	c = mm	500	500	500	500
	1.5	Load distance PT mast (from load wheel to fork face)	x = mm	445*	445*	450*	450*
	1.6	Wheelbase	y = mm	1425	1425	1625	1625
Weight	2.1	Service weight incl. battery	Kg.	3650	3930	4250	4650
Chassis	3.1	Tyres	type	Solid Cushion	Solid Cushion	Solid Cushion	Solid Cushion
	3.2	Tyre size, front		23 x 7 - 12	23 x 7 - 12	26 x 7 - 12	26 x 7 - 12
	3.3	Tyre size, rear		18 x 7 - 8	18 x 7 - 8	18 x 7 - 8	18 x 7 - 8
	3.4	Wheels front / rear (x = driven wheels)	nos.	2 x 2	2 x 2	2 x 2	2 x 2
	3.5	Track width front / rear	b11 = mm	975 / 960	975 / 960	975 / 960	975 / 960
Basic Dimensions	4.1	Mast Standard	type	Refer chart	Refer chart	Refer chart	Refer chart
	4.2	Overhead guard (cab) height	h6 = mm	2200	2200	2200	2200
	4.3	Seat height	h7 = mm	1125	1125	1125	1125
	4.4	Overall length	l1 = mm	3295*	3295*	3500*	3500*
	4.5	Length to face of fork	l2 = mm	2295*	2295*	2500*	2500*
	4.6	Overall width	b1 = mm	1150	1150	1150	1150
	4.7	Fork dimensions	s / e / l = mm	40 / 100 / 1000	40 / 100 / 1000	45 / 120 / 1000	45 / 120 / 1000
	4.8	Fork carriage (class)	type	2B - 2A	2B - 2A	2B - 2A	2B - 2A
	4.9	Fork carriage width	b3 = mm	1040	1040	1040	1040
	4.10	Width over forks (min. / max.)	b5 = mm	250 / 980	250 / 980	270 / 1000	270 / 1000
	4.11	Ground clearance, under mast, laden	m1 = mm	90	90	90	90
	4.12	Ground clearance, center of wheel base	m2 = mm	115	115	115	115
	4.13	Aisle width for (W) 1200 x (L) 1000 #	(W x L) = mm	4100	4100	4300	4300
	4.14	Turning radius	Wa = mm	2450	2450	2650	2650
Performance	5.1	Travel speed laden / unladen	Km / h	11	11	10	10
	5.2	Lift speed laden / unladen	m / s	0.25 / 0.28	0.25 / 0.28	0.22 / 0.30	0.20 / 0.27
	5.3	Lowering speed laden / unladen	m / s	0.22 / 0.20	0.23 / 0.20	0.23 / 0.20	0.25 / 0.20
	5.4	Gradient performance laden / unladen (max.)	%	12 / 15	10 / 15	10 / 15	10 / 15
	5.5	Service brake	type	Hydraulic	Hydraulic	Hydraulic	Hydraulic
Power	6.1	Drive motor rating S2 = 60 min.	Kw	8.0	8.0	8.0	12.0
	6.2	Lift motor rating S2 = 15 min.	Kw	8.0	8.0	8.0	8.5
	6.3	Battery voltage, nominal capacity	V / Ah	48 / 290	48 / 375	48 / 440	72 / 385
	6.4	Charger (Three phase - automatic)	V / A	48 / 50	48 / 50	48 / 50	72 / 55
	6.5	Battery weight	Kg.	500	650	750	990
Others	7.1	Type of drive control	type	Mosfet	Mosfet	Mosfet	Mosfet
	7.2	Oil Volume, hydraulic system	lit.	40	40	45	45
	7.3	Sound level	db (A)	85	85	85	85

Note: 1) * - For PD mast add 25 mm.,

2) # - 90° Stacking aisle width.,

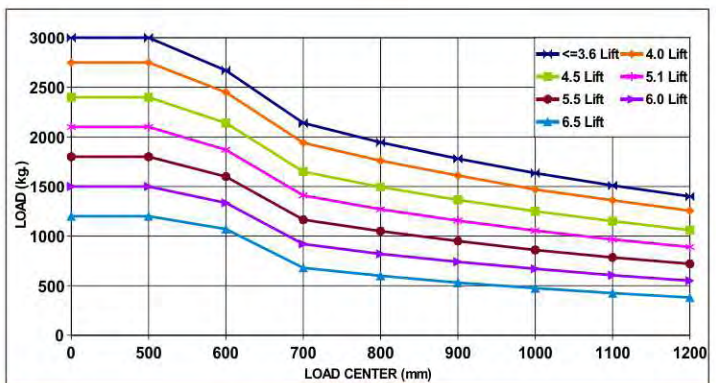
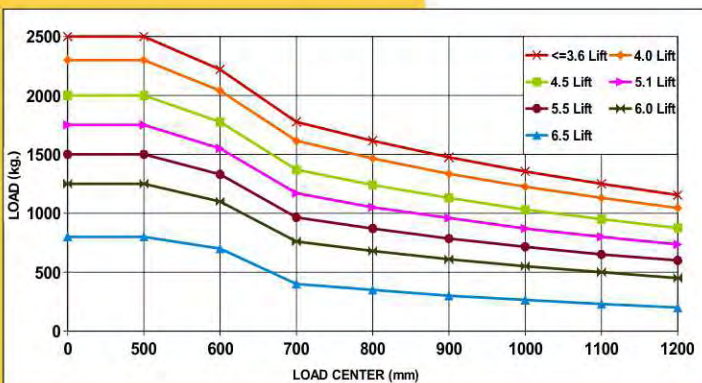
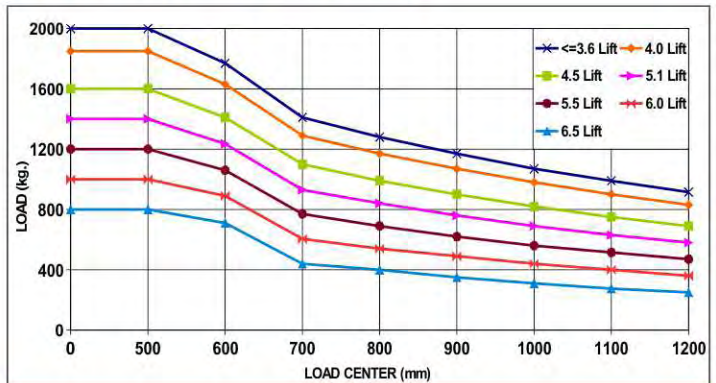
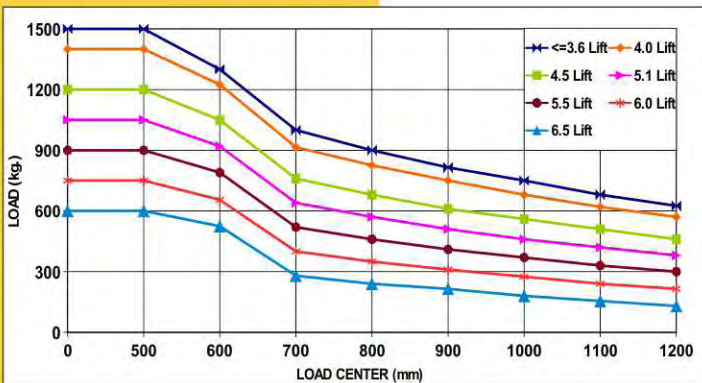
3) Right to make changes and technical improvement reserved. For any special requirement, please contact jost's HO

Mast Standard >>> Residual Load Capacity Chart

Mast Model	Closed Mast Height h1		Lift	Extended Mast Height	Free Lift	Residual Load Capacity (Load Centre 500 mm) (Kg) (Without Side Shift) [§]				Tilt angle
	FB15 / FB20	FB25 / FB30	h3*	h4 [#]	h2 [@] / h5 [#]	FB 15	FB 20	FB 25	FB 30	a x β
	mm	mm	mm	mm	mm					
2 Stage PT 30	2100	2175	3060	3670	100 [@]	1500	2000	2500	3000	6°x 12°
2 Stage PT 36	2400	2475	3660	4270	100 [@]	1500	2000	2500	3000	6°x 12°
3 Stage PD 45	2100	2175	4560	5170	1550	1200	1600	2000	2400	3°x 6°
3 Stage PD 60	2650	2725	6060	6670	2100	750	1000	1250	1500	3°x 6°
3 Stage PD 36	1750	1825	3660	4270	1250	1500	2000	2500	3000	6°x 12°
3 Stage PD 40	1900	1975	4060	4670	1350	1400	1850	2300	2750	6°x 6°
3 Stage PD 51	2350	2425	5160	5770	1800	1050	1400	1750	2100	3°x 6°
3 Stage PD 55	2650	2725	5560	6170	2100	900	1200	1500	1800	3°x 6°
3 Stage PD 65	2900	2975	6560	7170	2350	600	800	1000	1200	2°x 6°

Note:

- 1) * - The h3 lift heights mentioned in yellow colour are standard offerings.
- 2) * - The h3 lift heights mentioned in blue colour are available on request as optional extra with higher delivery period.
- 3) # - Refers to without load backrest. Extended back rest height = h4 + 550.
- 4) § - Residual capacity derated by 200 kg. with side shift.
- 5) The load backrest is suitable for racking level height of 1200mm. For racking level height below 1200mm, contact Jost's HO.



Note: De-ration for load center more than 600 mm takes into account the fork extension weight.

• For any special requirements, Please contact Jost's H.O., Dimensions indicated here are subject to variations of ± 20 mm and performance ± 10%. Service weight ± 50 kg. Right to make changes and technical improvement reserved.



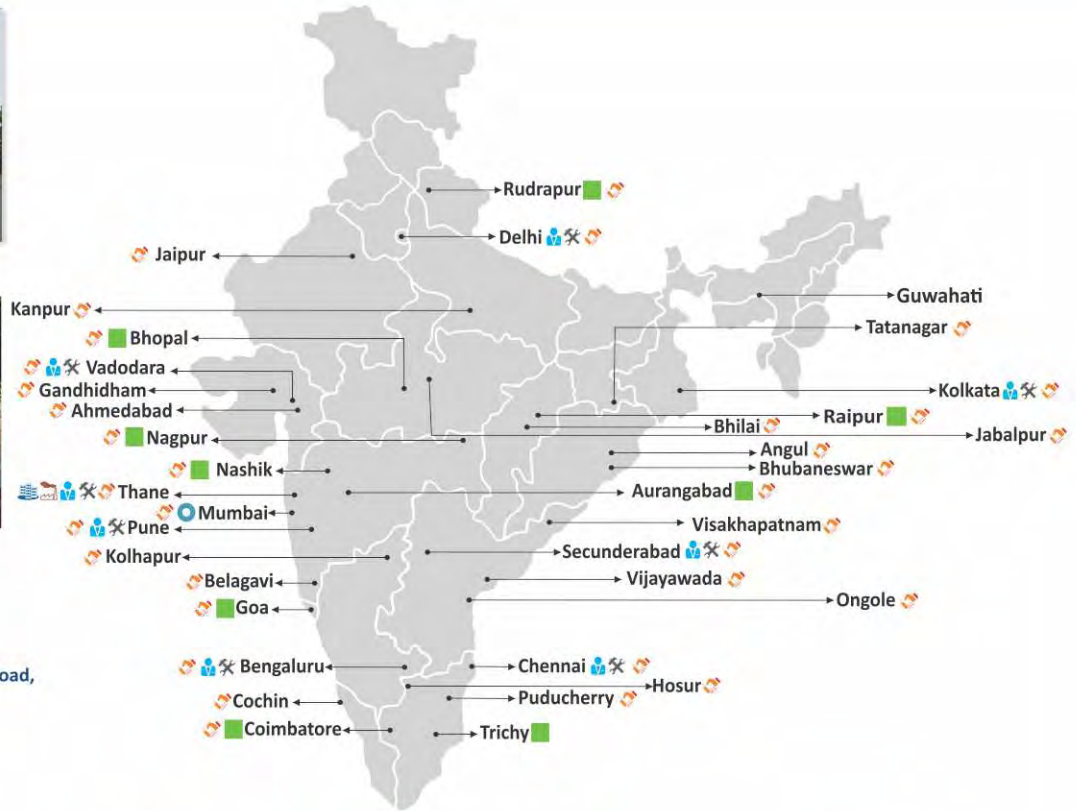
Since 1907

Jost's Engineering Company Limited

An ISO 9001 : 2008 Certified Company



Thane Factory



Registered Office (Mumbai)

Great Social Building, 60, Sir Phirozeshah Mehta Road,
Post Box 243, Mumbai - 400 001.
T.: + 91-22-6120 2300 F.: +91-22-6120 2345
E-mail : jostsho@josts.in

Registered Office Factory Head Office Sales Office Service Office Resident Engineers Dealer

Factory

Thane (Factory / Head Office)
C-7, Wagle Industrial Estate, Road No. 12, Thane - 400 604.
T.: +91-22-2582 1727, 6117 4000 F.: +91-22-6117 4020 E-mail: infomhe@josts.in

Sales & Service Office

Pune
Plot No. - 3, Survey No. 126, Paud Road, Pune - 411 038.
T.: +91-20-2543 4350 / 2543 4390 | F.: +91-20-2543 4393
E.: infomhe@josts.in, salespune@josts.in

Secunderabad
Plot. No. 9-1-119/A/1/1, 1st Floor, Old Lancers Lane, Beside Amsri Shamira Building,
Near St. Marys Centenary Degree College, Secunderabad - 500 025.
T.: +91-40-2771 4934 / 44 / 54 F.: +91-40-2771 2655
E.: infomhe@josts.in, saleshyd@josts.in

Vadodara
1st Floor, Guruprasad Society (S.B.I. Colony), Near Akota Stadium, Akota,
Vadodara - 390 007, Gujarat.
T: +91-265-2351 642 E.: infomhe@josts.in, salesbaroda@josts.in

Chennai
C-39, II Avenue, Annanagar, Post Box 3477, Chennai - 600 040.
T.: +91-44-2626 8536 / 2628 8407 F.: +91-44-2621 1708
E.: infomhe@josts.in, saleschennai@josts.in

Bengaluru
F-07 & H-07, 7th Floor, "SOLUS", Jain Heights, South Wing, No. 2, 1st Cross, J C Road,
Bengaluru - 560027
T.: +91-80-4123 4775 / 4885, F: +91-80-2225 9871 E: infomhe@josts.in, salesblr@josts.in

New Delhi
DSM 360, DLF Towers, 15 Shivaji Marg, New Delhi -110 015.
T: +91-11-4567 6000 / 4567 6014
E.: infomhe@josts.in, salesdelhi@josts.in

Kolkata
19, British Indian Street, Post Box 64, Kolkata - 700 069.
T.: +91-33-2242 9510 / 2248 2257 / 4008 1240 F.: +91-33-2248 0861
E.: infomhe@josts.in, mhcal@josts.in

"Register Service Calls Online at : www.josts.com"